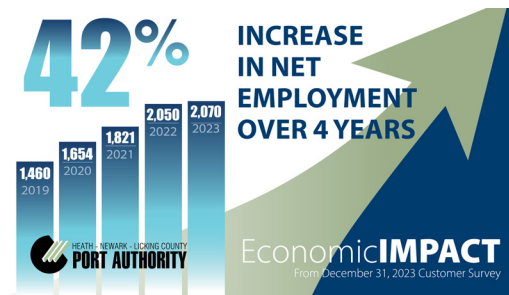


# FACT SHEET: IMPACT STORY



**Economic Impact.** Combined, the 26+ employers at the Port Authority's Central Ohio Aerospace and Technology Center campus represent a powerhouse of critical industry. A 2024 economic impact survey found:

- 2,070 are employed on the campus, a **42% increase** in just four years.
- An impressive seven employers had employment level increases of which five companies experienced **double-digit increases in employment**.
- Despite several company employment declines, a **combined \$16 million payroll increase** was estimated for 2023.



**Asked to look ahead to 2024**, the campus' customers answered favorably.

- Of the companies, 50% report expecting employment to rise in 2024.
- 35% of companies report expecting increased capital investment in 2024.

**Impactful.** Combined, the employers brought over \$3.8 million in local income tax revenue and ranked among the largest property taxpayers in Licking County.

**A microcosm of the resurgence of U.S. manufacturing.** Making products from guidance systems to baby formula and calibrating load cells to x-raying rocket materials, the companies are engaged in defense, food, metals, energy, coatings, and other diverse manufacturing sectors.

**Diversity of investments.** The flags of six countries fly in the Port Authority Boardroom as testimony to the diverse, international investment trends.

# FACT SHEET: ABOUT US

The Heath-Newark-Licking County Port Authority was created in 1995 to ensure the impact of the closing Newark Air Force Base could continue in Licking County. **Today, the campus employs more than when the base closed.** The tax base impact is much larger.

The workloads that remain are successful for the Department of Defense too. October 2021 marked the milestone of 25 years since privatization-in-place of Air Force workloads. Boeing, under inertial guidance system repair, and Bionetics, under an Air Force metrology contract, join AFMETCAL, housing the directorate of metrology, and Bionetics Defense Engineering Services Group continue the defense industry legacy at the Aerospace Center. MISTRAS Group tests 100% of rocket metals for Space X as part of its defense, energy, and aerospace footprint.

The Port Authority has a reputation as a **government innovator**. Originally, the Port Authority was predicted to need 50 employees to do its work. Today, it is managed by just six employees, all AI-equipped and tech saavy. It's governed by a nine-member board of community leaders. The Port Authority ranks as the largest, self-sustaining port authority among over 60 port authorities in Ohio, and in the top five overall.

Management, development, and community solutions describes the triple missions in which the Port Authority is engaged. The Authority is charged with property **management** for the former Air Force property and beyond. The Port Authority leases to Boeing with a facility lease through 2028 and options through 2043. Boeing received an 18-year extension on its key missile guidance systems workload through 2039.

Modernization continues. In 2022, a \$6.8 million new Force Lab was opened to provide new space for the Air Force Primary Standards Laboratory. The 56-lab metrology laboratory is managed by Bionetics with a contract extended to 2032. Updates are coming.

Through major land acquisitions and taking risks in speculative development, the Port Authority is an industrial **development** bank for people-ready industrial properties totaling over 700 acres. The Port Authority has been part of 14 industrial buildings on its properties readied for manufacturers on speculation.

It's worked. **The Aerospace Center has emerged as a model, diverse manufacturing center for Ohio and nationally.** Newcomers include Behr Paint, which opened a new paint manufacturing facility in 2024, and Prudential Cleanroom Services, expected to open in 2025. 2020 saw a tripling of building space by Ariel Corporation. Five companies are engaged in the growing plant-based food industry. Brain tissue R&D is underway in a cleanroom here.

**STEMFlex™ in Newark is the Authority's latest investment** in aiming to provide flex industrial space and grow the local tax base.

The Port Authority takes a role in providing **community solutions** for the region. It's *Potentia Financing* arm has undertaken over \$1 billion in creative financing to aid industrial development. Over \$12 million in savings has been leveraged for public infrastructure.

The Port Authority has put its money where its mouth is for STEM learning. **It's invested over \$1.5 million in STEM initiatives** encouraging young people and their parents to understand the local relevance and value of science, technology, engineering, and math skills.