

FACT SHEET: IMPACT STORY



Economic Impact. Combined, the 25+ employers at the Port Authority's Central Ohio Aerospace and Technology Center campus represent a powerhouse of critical industry. The survey of Dec 31, 2022 economic impact found:

- 2,050 employed on the campus, a **40% increase** in three years.
- An impressive 10 employers had employment level increases and four companies experienced **double-digit increases in employment**.
- A combined \$153 million payroll, for a **\$74,000+ annual average**.

Asked to look ahead to 2023, the campus' customers answered favorably.

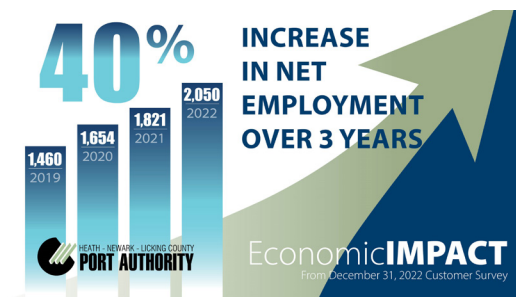
- 53% of the companies report expecting employment up in 2023.
- 44% of companies report expecting increased capital investment in 2023.

Impactful. Combined, the employers brought over \$3.4 million in local income tax revenue and ranked among the largest property taxpayers in Licking County.

STEM skills. At least one in six jobs are engineering-related.

Critical industry making from missile guidance systems to baby formula. The customers are engaged in defense, food, life sciences, metals, energy, coatings, and other critical industry sectors.

12 Spec Buildings in 12 Years. A new 30,000 sq. ft. industrial building opened on the campus in 2022. Spec development has been key to growing the impact.



FACT SHEET: ABOUT US

The Heath-Newark-Licking County Port Authority was created in 1995 to ensure the workload and capabilities of the Newark Air Force Base could remain in Licking County.

More than remain, they've thrived. October 2021 marked the milestone of 25 years since privatization-in-place of Air Force workloads. Boeing, under inertial guidance system repair, and Bionetics, under an Air Force metrology contract, join AFMETCAL, housing the directorate of metrology, and Bionetics Defense Engineering Services Group as the largest defense industry customers at the Aerospace Center.

The Port Authority has a reputation as a **government innovator**. Originally, the Port Authority was thought to need upwards of 50 employees to do its work. Today, it is managed by just six employees and governed by a nine-member board consisting of community leaders. The Port Authority has grown to become **the largest, self-sustaining port authority among over 60 port authorities in Ohio**, and in the top five overall.

Management, development, and community solutions describes the triple missions in which the Port Authority is engaged. The Port Authority is charged with property **management** for the former Air Force property home to critical industry. The Port Authority leases to Boeing with a lease extension through 2028 and options through 2043. In 2021, Boeing received an 18-year extension on its key missile guidance systems workload.

Modernization continues. In 2022, a \$6.8 million new Force Lab was opened to provide new space for the Air Force Primary Standards Laboratory. The 54-lab metrology laboratory is managed by Bionetics.

Through major acquisitions, the Port Authority is an industrial **development** land bank for a ready-to-build, industrial campus and two additional properties totaling 700 acres.

The Port Authority has invested in public infrastructure as part of the betterment of the Aerospace Center campus to prepare people-ready sites for manufacturers. The Aerospace Center's South Campus has emerged as a diverse manufacturing center in Central Ohio. Diversification of industry range from Behr Corporation announcing a new 300,000+ s.f. paint manufacturing facility to open in 2023 and recent news for plant-based food industry companies--GB Food, Gathered Foods, KeHo Foods, and Nature's One. 2020 saw a tripling of building space by Ariel Corporation. MISTRAS Group and Samuel Packaging Systems have also expanded here.

The Port Authority takes a role in providing community **solutions** for Licking County and the region. It's Potentia community solutions arm has undertaken \$959 million in creative financing for regional projects in the past 20 years, including the state's first-ever sales tax conversion project in New Albany which brought new infrastructure. To date, over \$11 million has been leveraged for public infrastructure from this creative approach.

The Port Authority has also focused on advocacy for STEM learning. The Port Authority has been among the top funders of and has provided leadership to a national-model STEM initiative at The Works, encouraging young people and their parents to understand the value of science, technology, engineering, and math skills. Port Authority investments have been part of a state-of-the-art SciDome at The Works and a \$1 million STEM scholarship with OSU-N and COTC.